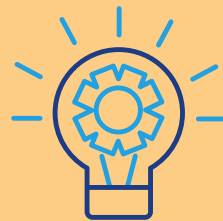


FACTS & FIGURES ABOUT HEARING LOSS

Hearing loss is often accepted by those affected and in society at large as a normal sign of aging.



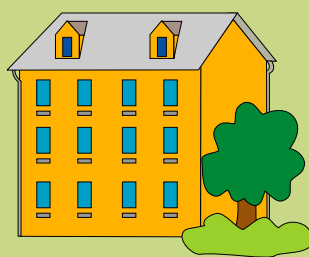
Education, seeking support or compensation usually do not take place.



In the group of people over 70, more than 50 percent are affected by hearing loss or hearing impairment!

HEARING LOSS

A distinction is made between a slight impairment of hearing with a hearing loss of 20 to 40 decibels and a severe hearing loss of between 60 and 80 decibels. Hearing loss of more than 90 decibels is referred to as the border to deafness (KDA, 2008).



People who live in a nursing home are often affected by hearing loss, whereby the causes are often unclear at the beginning, i.e. when moving in.

It is only in the course of the disease that the hearing loss is usually recognized by the nursing staff and possible support is initiated.



THE PROBLEM WITH HEARING LOSS



For people with hearing impairment or hearing loss, the problem is that they are largely excluded from communication.



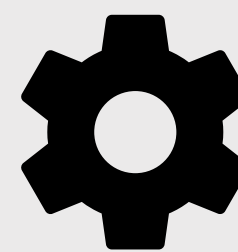
This exclusion from verbal communication can quickly lead to misunderstandings. It can even come to the point that affected persons develop distrust of their fellow human beings or isolate themselves out of shame.



In the case of existing hearing loss there now exists a pleasing number of technical aids that provide support and compensation (Dörrie-Sell, 2000).

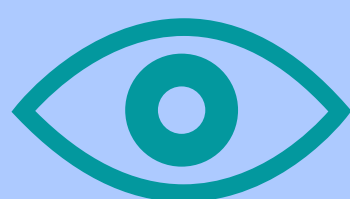
TECHNICAL AIDS

- Light signals
- Vibration signals
- Text phones
- Messenger Services
- Teletext

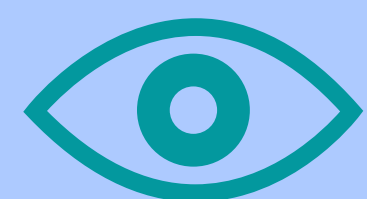


- Hearing aids
- Cochlear implants
- Wireless voice transmission systems in larger rooms or television

AWARENESS OF COMMUNICATION



In addition to using technical support options, raising awareness of communication barriers that exist due to hearing loss proves to be extremely important.



References

- Dörrie-Sell, A. (2000). Hörbehinderung. Die anderen hören – ich nicht. Psychosoziale Betreuung und Pflege von Patienten mit einer Hörbehinderung. *Die Schwester Der Pfleger*, 39, 40-43.
- Kuratorium Deutsche Altershilfe (KDA) (2008). Doppelt ausgeschlossen: Menschen mit Demenz und Hörschädigung. *Pro Alter*, 3/08, 33-36.
- Images used were retrieved from Canva and Pixabay.



Communicare is licensed under a Creative Commons Attribution-NonCommercial 4.0 International License.



Project number: 2020-1-DE02-KA204-007685. This publication reflects the views only of the author(s), and neither the Commission nor the National Agency can be held responsible for any use which may be made of the information contained therein.